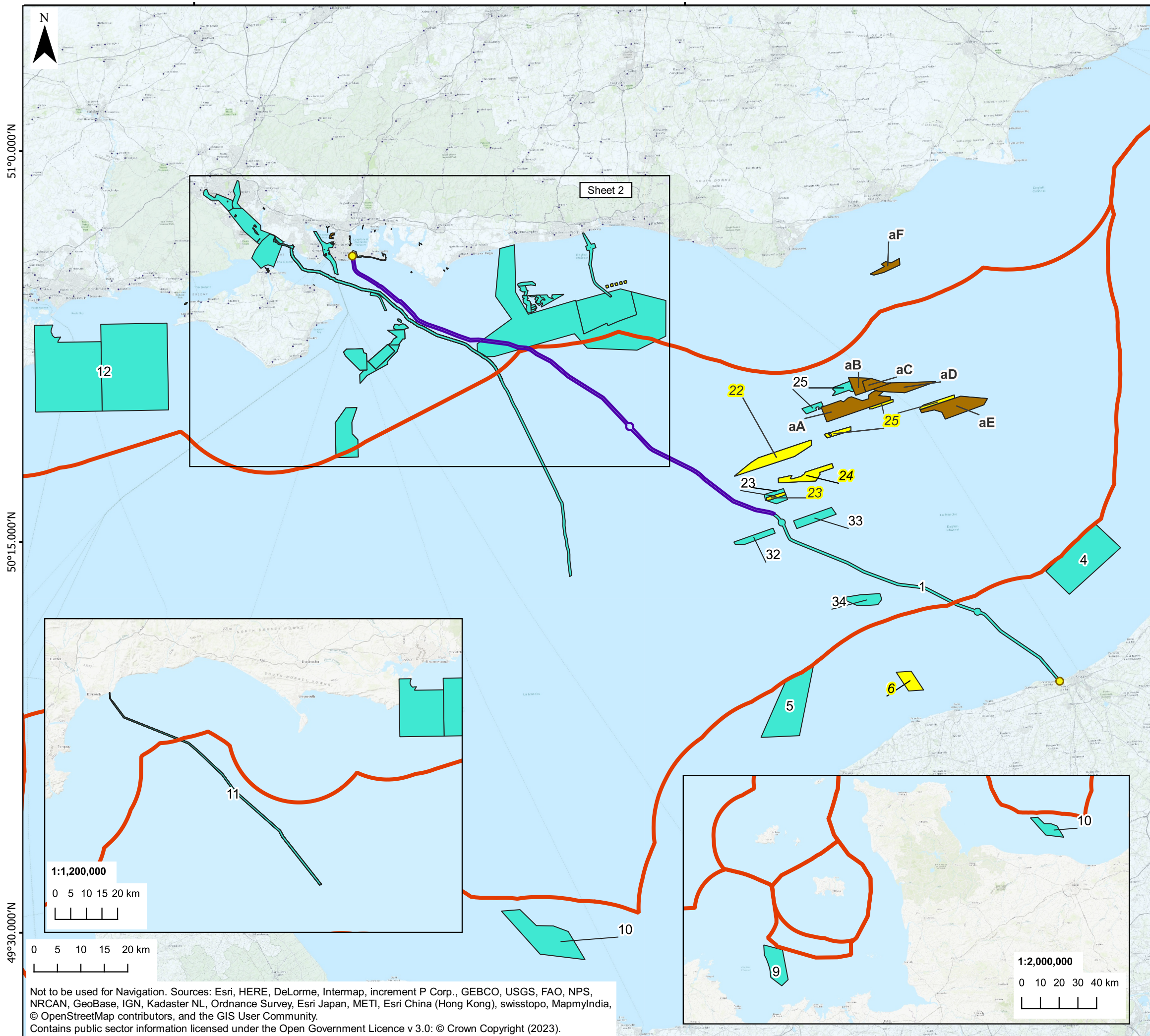


1°30.000'W

0°0.000'



AQUIND Interconnector

- Landfall location
- Marine Cable Corridor
- 12 nautical mile limit
- Project remains valid
- Project no longer valid
- New project

All projects (data from MMO, TCE, OGA, July 2019, updated October 2019, updated in January 2021 and March 2023)

Projects are shown where the whole or part of the dataset polygons are located within 230 km of the UK Marine Cable Corridor. Number labels reflect the ID number of each project shown in the cumulative assessment matrices. Projects no longer valid have labels highlighted yellow with italic text. Letter labels reflect each new project identified in 2023 and shown in the cumulative assessment matrices.

a = aggregate dredging projects
 c = coastal projects
 d = dredge and disposal projects

The Infrastructure Planning (Environmental Impact Assessment) Regulations 2017.

01	23/03/2023	JO	FIRST DRAFT	SM	SL
REV	DATE	BY	DESCRIPTION	CHK	APP

DRAWING STATUS: **Approved**



The Natural Power Consultants Limited, The Green House
 Forrest Estate, Dalry, Castle Douglas, DG7 3XS, UK
 Tel: +44 (0)1644 430008 www.naturalpower.com

CLIENT:



PROJECT: **AQUIND Interconnector**

TITLE: **Figure 8.1A. Sheet 1. Location of In Combination Projects 2023**

SCALE AT A3: 1:800,000	CHECKED: SM	APPROVED: SL
---------------------------	----------------	-----------------

PROJECT NO: EN020022	DESIGNED: JO	DRAWN: JO	DATE: 31/03/2023
-------------------------	-----------------	--------------	---------------------

DRAWING NO: EN020022 - HRA - 8.1A	REV.NO: 01
---	----------------------

© WSP UK Ltd

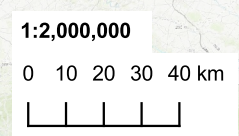
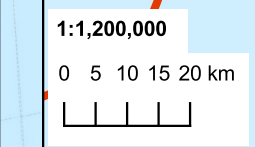
1°30.000'W

0°0.000'

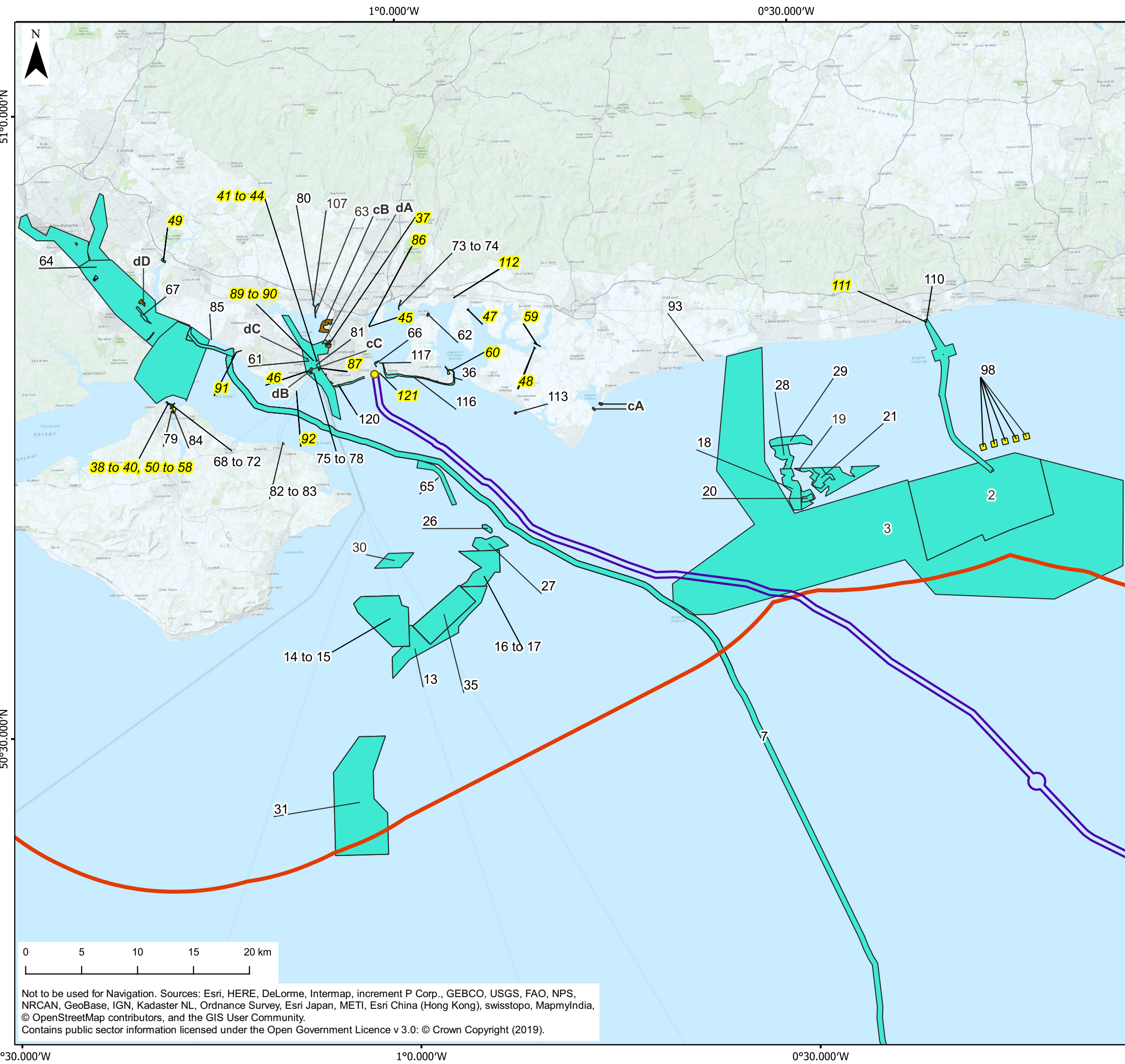
51°0.000'N

50°15.000'N

49°30.000'N



Not to be used for Navigation. Sources: Esri, HERE, DeLorme, Intermap, increment P Corp., GEBCO, USGS, FAO, NPS, NRCAN, GeoBase, IGN, Kadaster NL, Ordnance Survey, Esri Japan, METI, Esri China (Hong Kong), swisstopo, MapmyIndia, © OpenStreetMap contributors, and the GIS User Community.
 Contains public sector information licensed under the Open Government Licence v 3.0: © Crown Copyright (2023).



AQUIND Interconnector

- Landfall location
- ▭ Marine Cable Corridor
- 12 nautical mile limit

All projects (data from MMO, TCE, OGA, July 2019, updated October 2019, updated in January 2021 and March 2023)

- ▭ Project remains valid
- ▭ Project no longer valid
- ▭ New project

Projects are shown where the whole or part of the dataset polygons are located within 230 km of the UK Marine Cable Corridor. Number labels reflect the ID number of each project shown in the cumulative assessment matrices. Projects no longer valid have labels highlighted yellow with italic text. Letter labels reflect each new project identified in 2023 and shown in the cumulative assessment matrices.
 a = aggregate dredging projects
 c = coastal projects
 d = dredge and disposal projects

The Infrastructure Planning (Environmental Impact Assessment) Regulations 2017.

REV	DATE	BY	DESCRIPTION	CHK	APP
01	30/03/2023	JO	FIRST DRAFT	SM	SL

DRAWING STATUS: **Approved**



natural power

The Natural Power Consultants Limited, The Green House
 Forrest Estate, Dalry, Castle Douglas, DG7 3XS, UK
 Tel: +44 (0)1644 430008 www.naturalpower.com

CLIENT:



PROJECT: **AQUIND Interconnector**

TITLE: **Figure 8.1A. Sheet 2. Location of In Combination Projects 2023**

SCALE AT A3: 1:330,000	CHECKED: SM	APPROVED: SL
---------------------------	----------------	-----------------

PROJECT NO: EN020022	DESIGNED: JO	DRAWN: JO	DATE: 31/03/2023
-------------------------	-----------------	--------------	---------------------

DRAWING NO: EN020022 - HRA - 8.1A GB201394_M_147_A	REV.NO: 01
---	----------------------

© WSP UK Ltd

Not to be used for Navigation. Sources: Esri, HERE, DeLorme, Intermap, increment P Corp., GEBCO, USGS, FAO, NPS, NRCAN, GeoBase, IGN, Kadaster NL, Ordnance Survey, Esri Japan, METI, Esri China (Hong Kong), swisstopo, MapmyIndia, © OpenStreetMap contributors, and the GIS User Community.
 Contains public sector information licensed under the Open Government Licence v 3.0: © Crown Copyright (2019).